



**PROFILE
DESIGN**

AERIA ULTIMATE AEROBARS

REVISION 01-12-16-2019

INTRODUCTION

Thank you for purchasing this Profile Design Aerobar. These instructions apply to the Aeria Ultimate Aerobar, with Ergo, Race or Boom armrests and any Profile Design Extension

Please read these instructions thoroughly before attempting to install this item. Proper installation is required for compliance with Profile Design's warranty policy. If you are not familiar with installation of Aerobars or their accessories, please seek the assistance of your local Profile design dealer by logging on to www.profile-design.com and using "dealer search" or by calling Profile Design's customer service number p.# 888.800.5999.

Note to Dealers: If you install this product for the consumer, please provide him/her with this owner's manual after installation.

Tools and materials required:

- 5mm Hex Wrench
- 4mm Hex Wrench
- Torque Wrench for a 5mm and 4mm Hex fitting
- Assembly compound such as Finishline Fiber Grip™
- Grease such as Finishline Premium Grease
- Threadlocker such as Loctite® Threadlocker Blue 242®
- Isopropyl alcohol
- Cutting guide
- Hacksaw (32T blade for carbon, 18T for aluminium)
- Or a pipecutter for aluminium
- Half round file
- Electrical/Insulation tape
- Clean, lint free cloth

Your Aerobar kit should contain:

- One (1) carbon fibre basebar
- Two (2) aerobar brackets with wedge clamping system (aluminium)
- Four (4) M6x 20 /25/30/35/40/45/50/55/60/65/70/75/80/85/90 bolts
- Four (4) M6 square washers
- Two (2) carbon extensions
- Two (2) armrest cups
- Two (2) armpad cushions (foam)
- Two (2) hook and loop stickers
- Four (4) M6x12 countersunk bolts
- Aerobar riser kit including bridge

Optional accessories compatible with this Aerobar

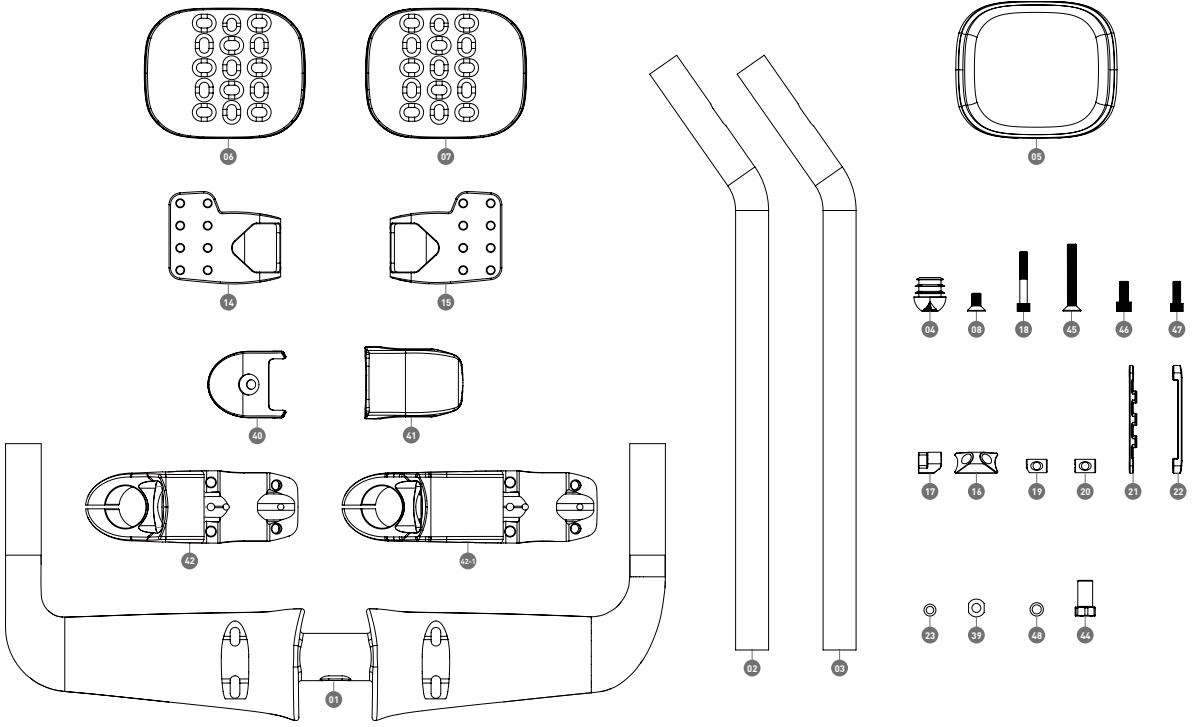
- Profile Design Aeria Ultimate Stem
- Profile Design 3/0ne Brake Levers
- Profile Design Hydration Systems such as the FC and HC series

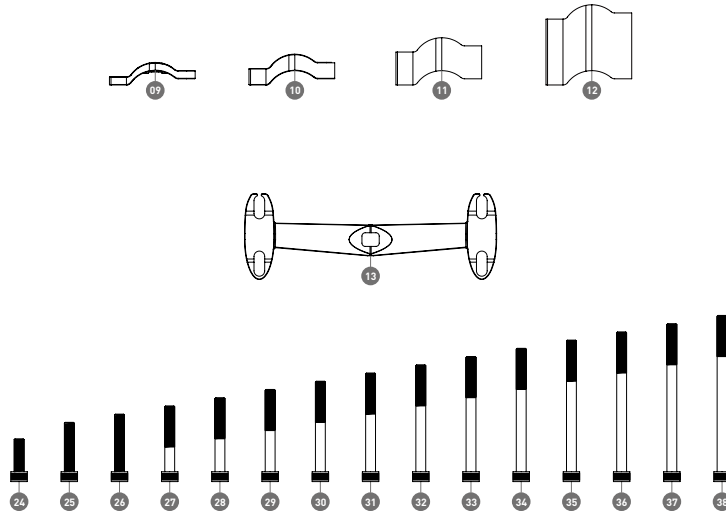
If anything is missing from the Aerobar kit please contact your dealer.

Please note that threaded areas have been pre-treated by Profile Design during production with a special blue thread locking compound. This special compound is easy to detect on the threads of all bolts provided. If you cannot detect this thread locking compound or you are re-installing the bolt, re-apply a suitable thread locking compound as available from Loctite® or another company before assembly.

WARNING: Periodically check the Aerobar for damage, particularly for scratches through the anodised coating (aluminium parts) or clearcoat (carbon parts) that could lead to degradation and weakening of the base material. Replace your Aerobar if you notice any damage from use or accident.

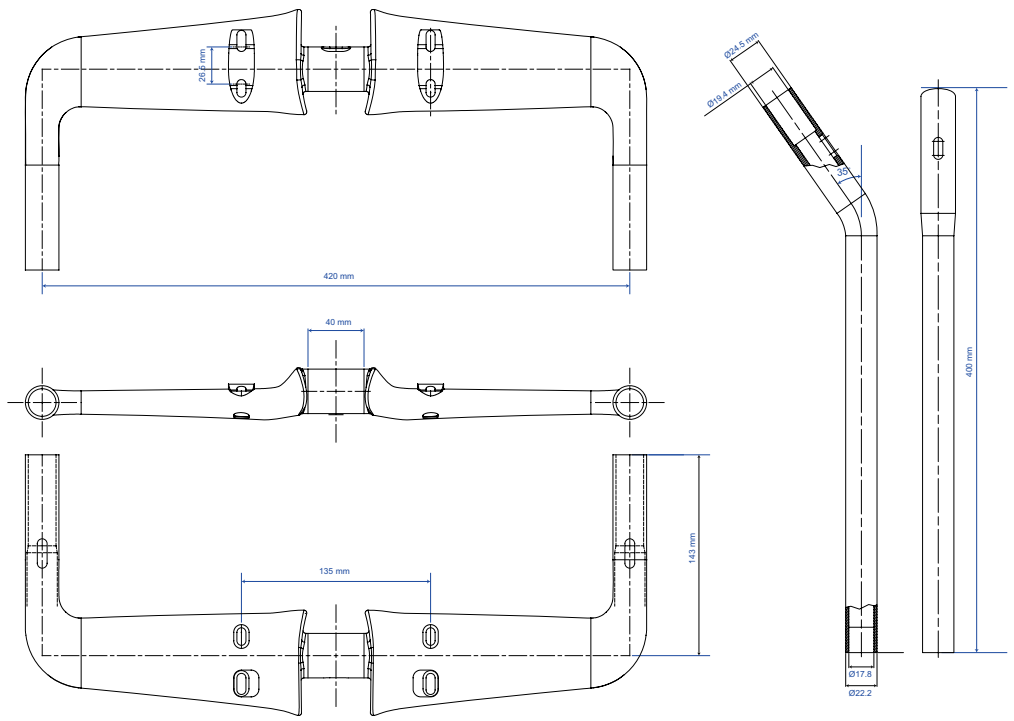
COMPONENT LIST

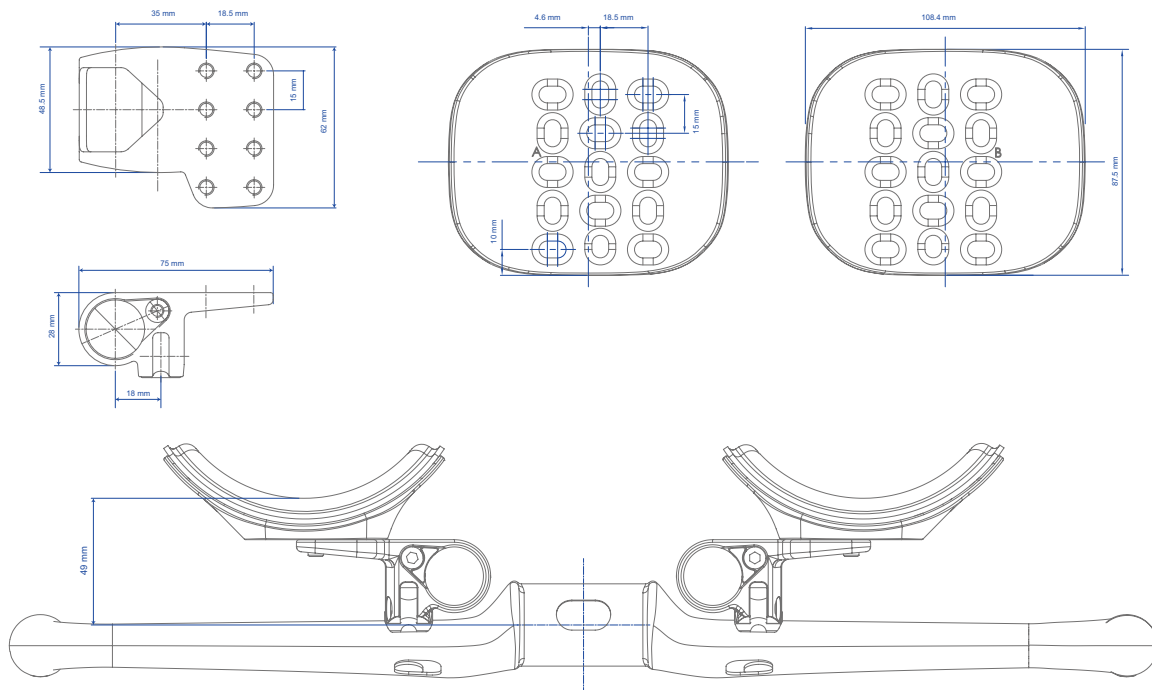




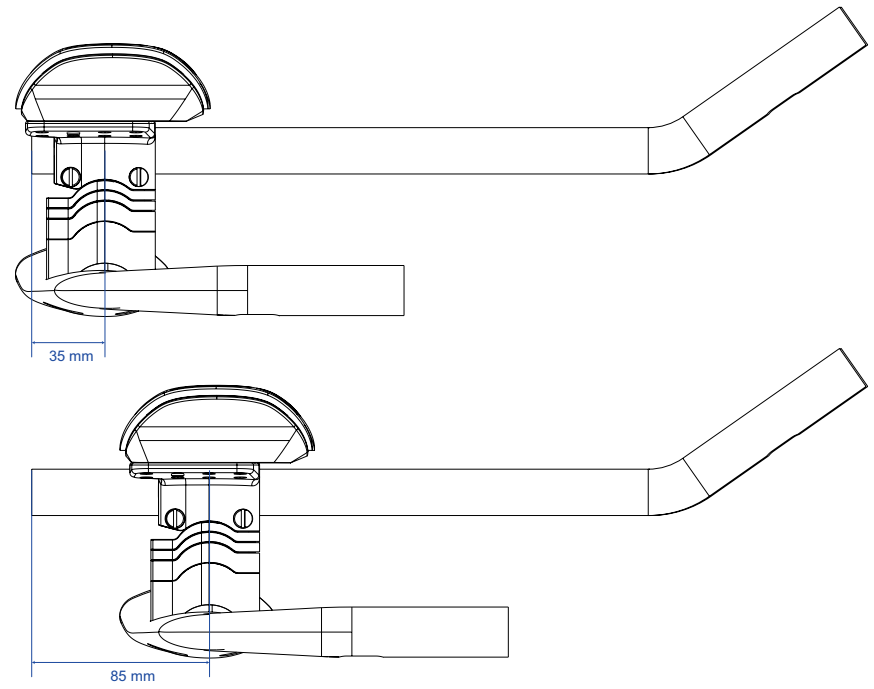
Ref.#	Part#	QTY. Req.	Part Description
1	CA00479 / 852263	1	Aeria Ult Wing II 42cm UD Matte black
2	CA00504 / 852273	1	Extension - 35C+ 400mm Carbon UD Matte Black W/Black Logo Right[B]
3	CA00503 / 852272	1	Extension - 35C+ 400mm Carbon UD Matte Black W/Black Logo Left[A]
4	716667	2	End Plug - 35C- Black w/Cable Hole (Rear)
5	DG00106 / 685215	2	PAD - RACE/ERGO 10mm
6	DG00102 / 200062	1	Armrest - ERGO W/Hook Sticker Side A
7	DG00103 / 200063	1	Armrest - ERGO W/Hook Sticker Side B
8	GA00277 / 313593	4	Bolt - M6x12 FHB w/Nylok Stainless[SUS304]
9	AL00047 / 293147	2	Riser - Aeria Ult BK 5mm
10	AL00048 / 293148	2	Riser - Aeria Ult BK 10mm
11	AL00049 / 293149	2	Riser - Aeria Ult BK 20mm
12	AL00050 / 293150	2	Riser - Aeria Ult BK 40mm
13	AE00076 / 683188	1	Bridge - Aeria Ult BK 5mm
14	AE00098 / 189375	1	Bracket - Aeria Ult Top Bracket DM Alloy Anodized Black L (w/Assembling Indicator Mark)
15	AE00099 / 189376	1	Bracket - Aeria Ult Top Bracket DM Alloy Anodized Black R (w/Assembling Indicator Mark)
16	AL00042ZZ / 274454	2	Wedge small-Aeria Ult Internal
17	AL00040ZZ / 274452	2	Wedge small-J5 Internal
18	GA00270 / 313585	2	Bolt - M5*35SHB BK w/nylock
19	GB00042 / 274462	2	Barrel - Aeria Bracket w/Slot & Slant Black
20	GB00061 / 274461	2	Barrel - Aeria Bracket w/Slot Black
21	AU00038ZZ / 189348	1	Bracket top J5 BTA
22	AU00039ZZ / 189349	1	Bracket bottom J5 BTA
23	GC00020ZZ / 275565	4	Washer-M5 Silver IACRM1
24	GA00242 / 313528	4	Bolt - M6*20SHB BK w/nylock
25	GA00243 / 313531	4	Bolt - M6*25SHB BK w/nylock
26	GA00244 / 313532	4	Bolt - M6*30SHB BK w/nylock
27	GA00236 / 313530	4	Bolt - M6*35SHB BK w/nylock
28	GA00239 / 313533	4	Bolt - M6*40SHB BK w/nylock
29	GA00240 / 313534	4	Bolt - M6*45SHB BK w/nylock
30	GA00241 / 313535	4	Bolt - M6*50SHB BK w/nylock
31	GA00253 / 313537	4	Bolt - M6*55SHB BK w/nylock
32	GA00244 / 313538	4	Bolt - M6*60SHB BK w/nylock
33	GA00245 / 313539	4	Bolt - M6*65SHB BK w/nylock
34	GA00256 / 313540	4	Bolt - M6*70SHB BK w/nylock
35	GA00252 / 313541	4	Bolt - M6*75SHB BK w/nylock
36	GA00249 / 313542	4	Bolt - M6*80SHB BK w/nylock
37	GA00233 / 313543	4	Bolt - M6*85SHB BK w/nylock
38	GA00262 / 313544	4	Bolt - M6*90SHB BK w/nylock
39	GC00035ZZ / 275674	4	Washer 6*12*1.5 UCP
40	AQ00037 / 323199	1	Headset - Top Cap of Aeria Ultimate Stem Black [2018 Revision]
41	AB00556ZZ / 323197	1	Front cap-Aeria Ult
42	539135	1	Stem - Aeria Ult 70mm Alloy Body Black [2018 Version]
42-1	AB00560 / 539134	1	Stembody- Aeria Ult 100mm Alloy Body Black [2018 Version]
43	OA00020ZZ / 274456	1	Cable Guide - Noodle
44	GA00222ZZ / 274457	1	Adjust bolt for front brake
45	313594	1	Bolt - M6*45FHB Black Chrom
46	GA00274 / 313579	4	Bolt - M6*14SHB Stainless Steel BK w/nylock
47	GA00248 / 313573	2	Bolt-M5*14 SHB
48	GC00022ZZ / 950008	4	Washer-M6x9x.8 SS

PART DRAWINGS

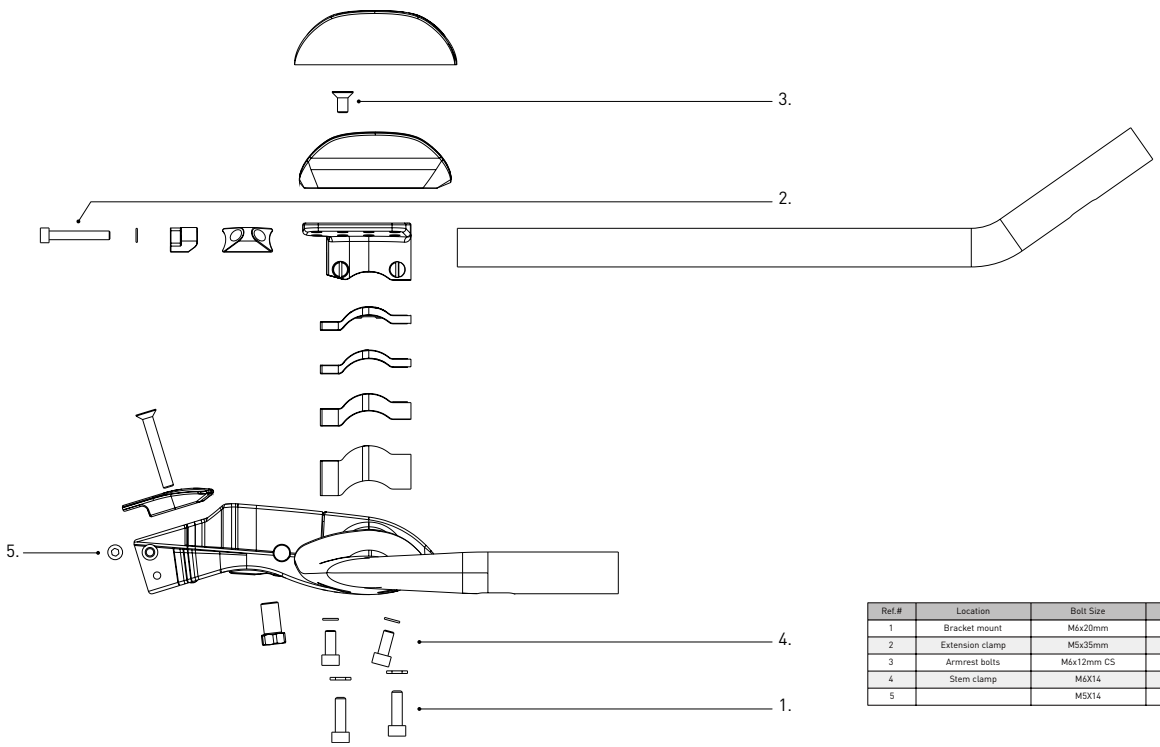




PRODUCT SPECIFIC SETUP LIMITATIONS

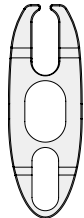


TORQUE SETTINGS

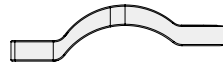


Ref.#	Location	Bolt Size	Torque
1	Bracket mount	M6x20mm	6Nm [53 inlbf]
2	Extension clamp	M5x35mm	5Nm [44 inlbf]
3	Armrest bolts	M6x12mm CS	4.7Nm [42 inlbf]
4	Stem clamp	M6X14	6Nm [53 inlbf]
5		M5X14	5Nm [44 inlbf]

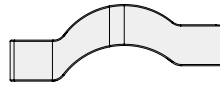
BOLT LENGTHS



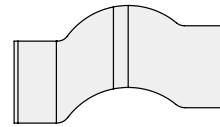
Spacer



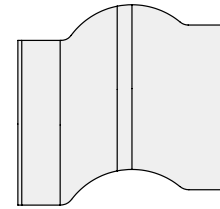
Height: 5mm



Height: 10mm

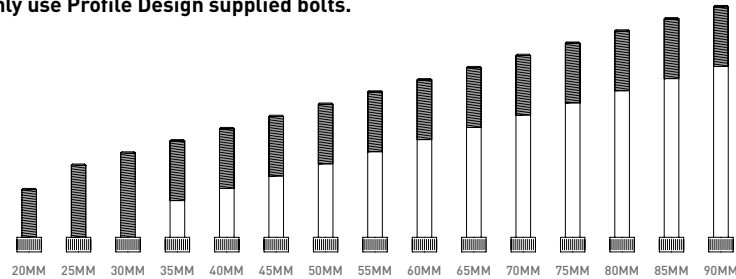


Height: 20mm



Height: 40mm

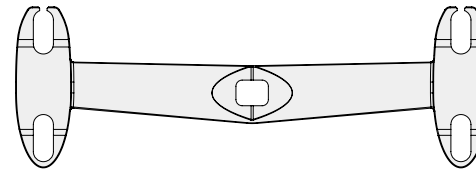
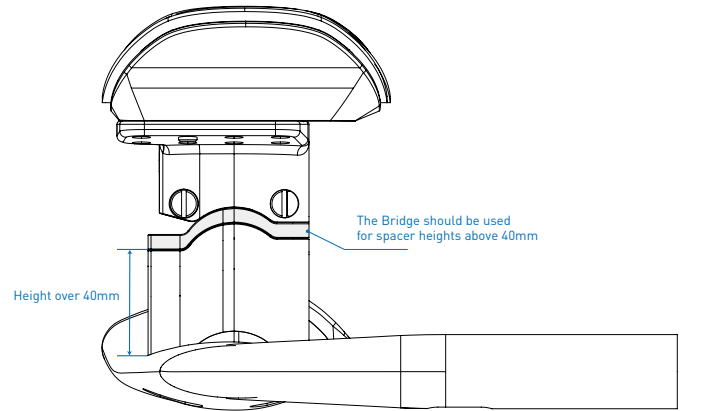
 Only use Profile Design supplied bolts.



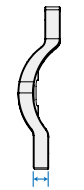
Risers (mm)	0	5	10	15	20	25	30	35	40	45	50	55	60	65	70	75	80
Bolt (mm)	20	25	30	35	40	45	50	55	60	65	70	75	80	85	90	Non	Non

BOLT LENGTHS

Aerobar Stack		Spacer Height (mm)	Spacers Used	Bolt Length (mm)
Ergo / Race 10mm	Ergo / Race 5mm			
55	50	0	0	20
60	55	5	5	25
65	60	10	10	30
70	65	15	5, 10	35
75	70	20	20	40
80	75	25	5, 20	45
85	80	30	10, 20	50
90	85	35	5, 10, 20	55
95	90	40	40	60
100	95	45	40, Bridge	65
105	100	50	5, 40, Bridge	70
110	105	55	10, 40, Bridge	75
115	110	60	5, 10, 40, Bridge	80
120	115	65	20, 40, Bridge	85
125	120	70	5, 20, 40, Bridge	90



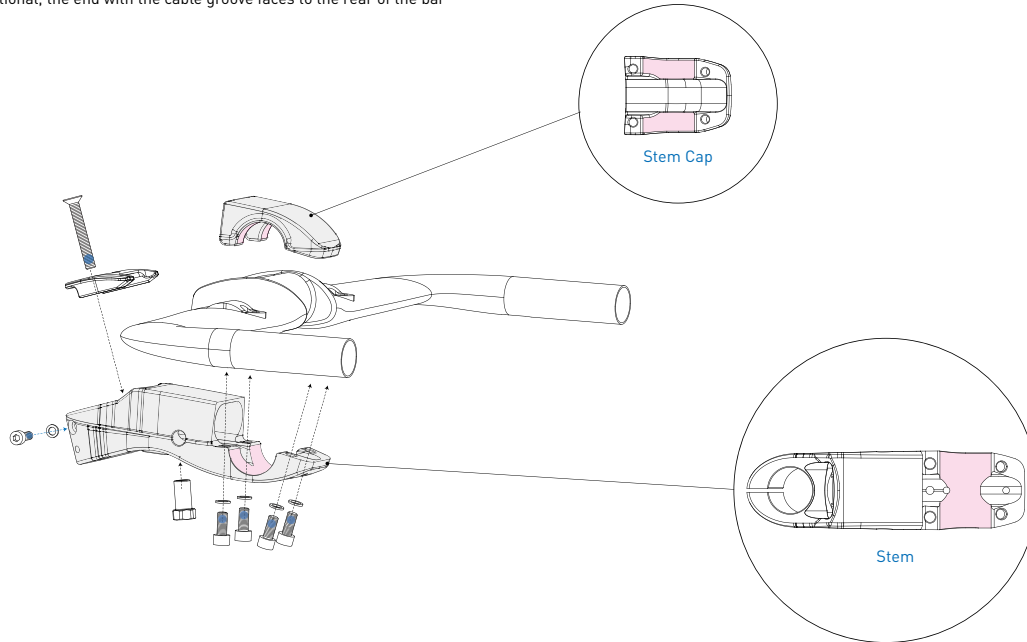
Bridge



Height :5mm

INSTALLATION INSTRUCTIONS

1. Apply a thin coating of assembly compound to the curved lower surface of the aero bar bracket
2. If using risers consult the bolt length table to ensure you use the correct length bolt for your setup. Apply assembly compound to the contact surfaces of the risers
 - a) Note that the risers are directional, the end with the cable groove faces to the rear of the bar



- Assembly compound
- Threadlocker
- Lithium grease

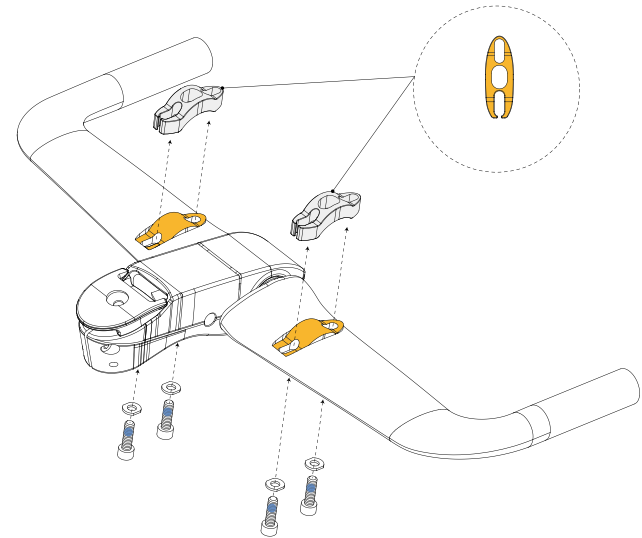
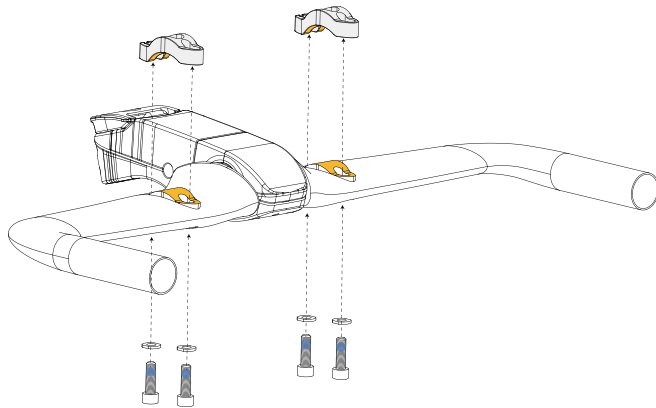
3. Assemble the bracket and risers.

a) Assembly tip – it is usually easier to start with the bolt at the front of the bracket.

b) Use the locator groove on the side of the threaded barrel (in the aerobar bracket) to aid in aligning the barrel for bolt installation.

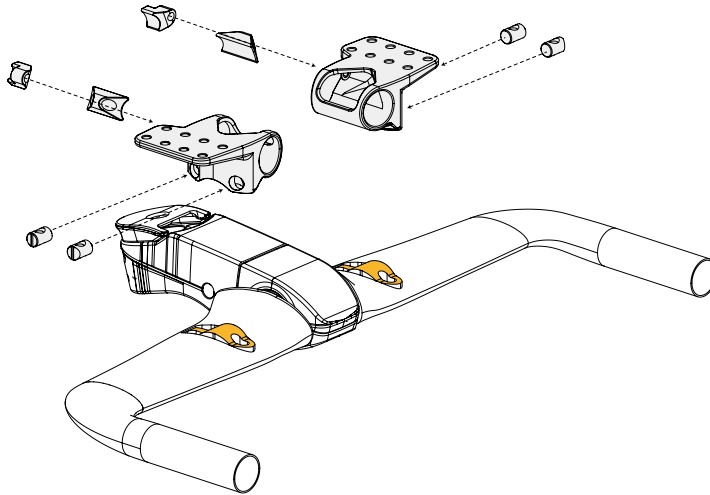
4. Tighten the bolts until the aerobar bracket is firmly in place and repeat with the other side.

5. Install the extensions in the desired position and tighten the M3 extension fixing bolt using the 5mm Hex wrench so they are held snugly.

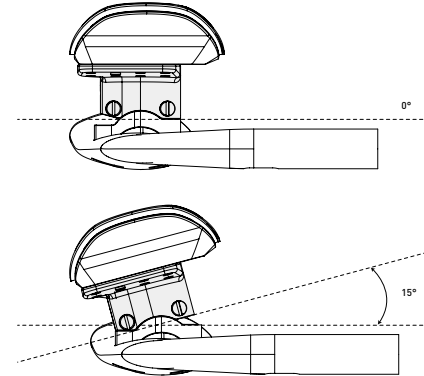


- Assembly compound
- Threadlocker
- Lithium grease

6. Install the shifters as per the shifter manufacturer's instructions. We recommend a light coating of assembly compound on the inside of the extension prior to installing the shifter.
7. Install the cables as per instructions from the shifter manufacturer.
8. Check the placement of the brackets and extensions then use the torque wrench with a 5mm fitting to tighten the aerobar bracket clamp to 6Nm.

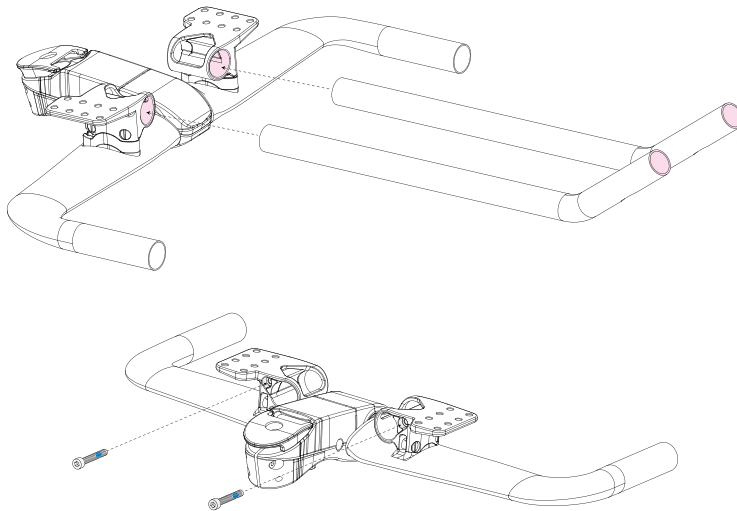





- Assembly compound
- Threadlocker
- Lithium grease



WARNING:
 Using bolts that are too long for the risers and bracket will prevent correct installation. Bolts that are too short may lead to failure during use.

9. Then use the torque wrench with a 4mm fitting to tighten the extension clamp to 5Nm.
10. Fasten the armrests to the brackets using the M6x12mm countersunk bolts, note that the armrests have an offset design so care is required to ensure each side is positioned in the same way.

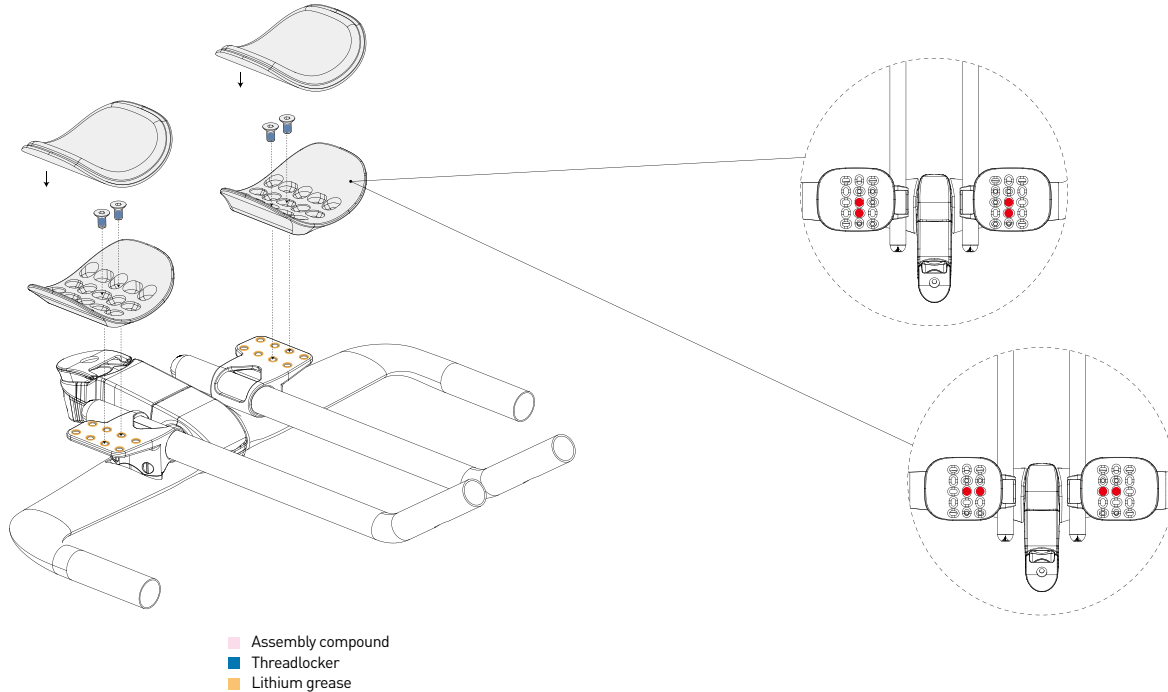


-  Assembly compound
-  Threadlocker
-  Lithium grease

HOW TO CUT THE EXTENSIONS

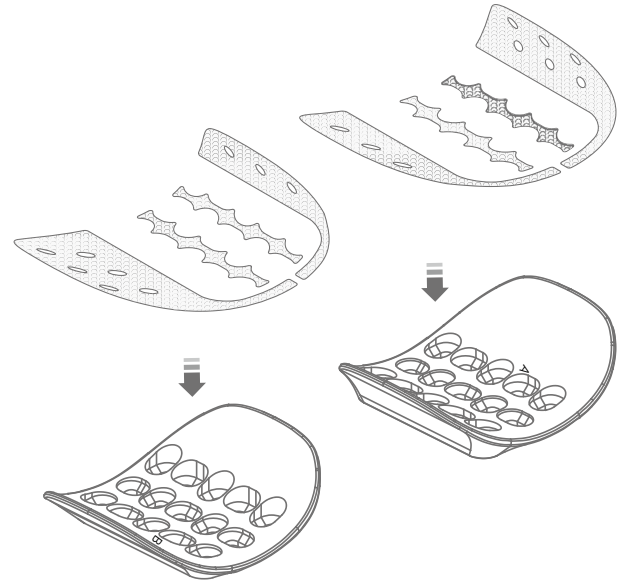
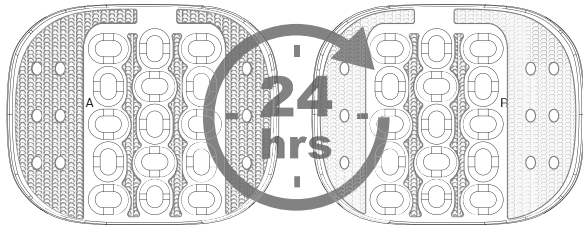
1. Determine the required extension length by performing a bike fit or measuring the existing extensions.
2. Mark the point at which you wish to make a cut.
3. We recommend checking your measurements after first marking the cut line to ensure that you do not inadvertently cut the extensions too short.
4. If using a cutting guide mount it securely in a vice. Then place the extension in the guide and line up the marked cut line with the slot in the cutting guide.
 - a. For aluminium an 18 tooth blade is recommended. Along with eye protection.
 - b. For carbon a 32T or carbon specific blade is recommended. Wrap the extension with insulation tape at the cut line to limit the risk of splintering the carbon at the blade exit point.
5. If cutting carbon, wear a breathing mask, gloves and eye protection then dispose of the dust residue carefully. Airborne dust particles are a respiratory hazard
6. Using the hacksaw, make firm strokes of the blade through the guide, allowing the blade to do the work. Do not apply excessive force to the hacksaw as you risk snapping the blade and the possibility of injury.
7. Alternately, if you are using a pipe cutter (only on aluminium extensions) – first apply insulation tape either side of the cut line to protect the finish of the extension from the rotating wheels.
8. Line the cutter up carefully with the cut line then rotate with a smooth motion, gradually depressing the cutting wheel further as the cut depth increases.
9. Repeat the process for the second extension.
10. Once you have cut both extensions, use the half round file to remove any sharp edges from both the interior and exterior faces of the extension.

11. Apply a light coating of grease to the surface of the bolts as a protective layer against the effects of sweat.
12. Attach the cushion by placing carefully on hook and loop backing of the armrest and hold firmly for 30 seconds. Repeat for the other armrest. Note that the cushions on these models of armrest are symmetrical, so it doesn't matter which side each cushion is applied to.



HOW TO INSTALL NEW ARMRESTS

1. To fit the armrests first ensure the inner face of the armrest is free of lint and grease, if the armrest has previously had a hook and loop sticker applied the residue should first be removed either mechanically or with a citrus based solvent.
2. Before applying the hook and loop sticker, you may choose to wipe down the surface with isopropyl alcohol to ensure good adhesion. Remove the backing from the hook and loop sticker and apply it to the armrest, smoothing the sticker out to ensure there are no air bubbles trapped under it.
3. Allow the sticker 24 hours to cure before use.

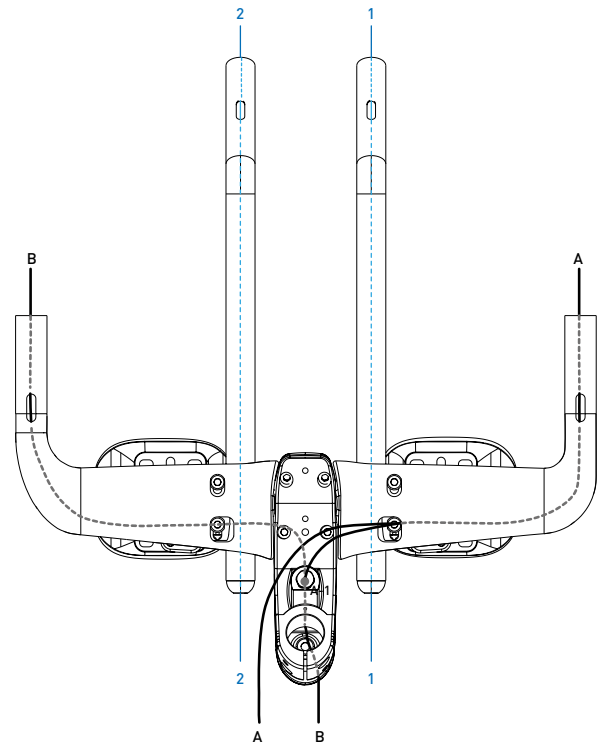
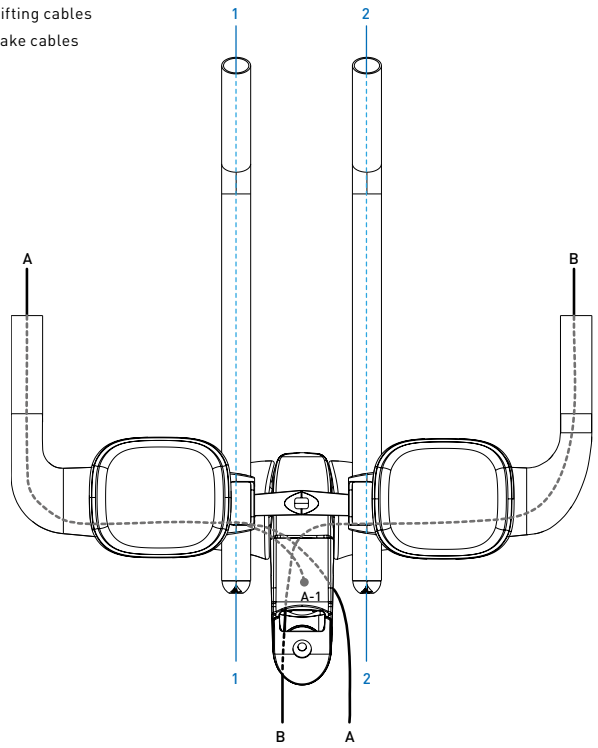


ASSEMBLING THE AERIA ULTIMATE BAR WITH AN AERIA ULTIMATE STEM

1. First route the brake outer cables through the basebar, exiting from the hole within the stem clamp area.
2. If using electronic gearing there are two options for cable routing.
 - a) Route the cables through the basebar and out of the rear hole of the aerobar bracket mount.
 - b) Cables are routed out the side of the stem.
3. Apply assembly compound to the inner face of the stem clamp area.
4. Install the basebar in the stem, threading the brake outer and electronic cables through the relevant exit ports as you go.
 - a) Front brake outer cable exits via the threaded hole in the stem base.
 - b) If using a centrepull front brake caliper install the threaded cable stop and supplied (with the stem) noodle.
 - c) Rear brake outer cable and electronic gear cables exit via the top port ahead of the steerer tube.
5. Proceed with the assembly of the Aeria Ultimate bar as detailed above.
6. Once gear and brake cable installation is completed, fit the Aeria Ultimate stem cap over the cables.

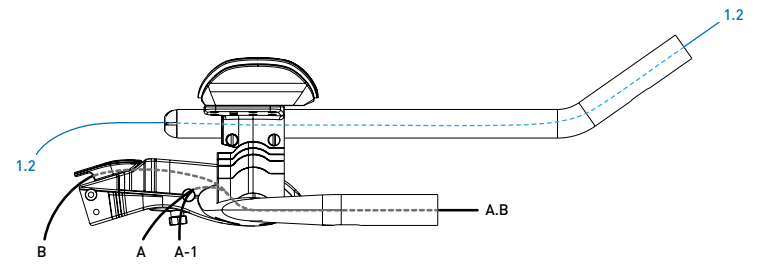
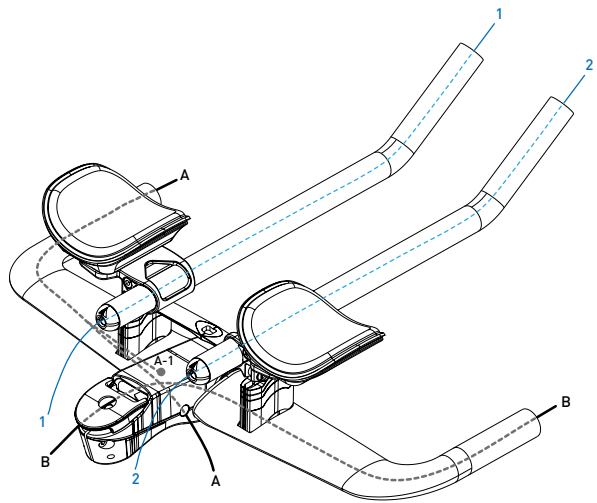
CABLE ROUTE MAP

- Shifting cables
- Brake cables



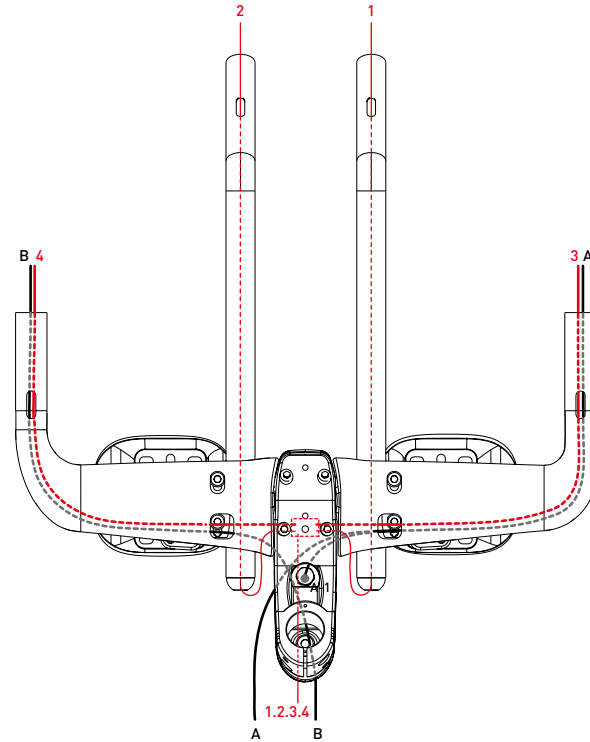
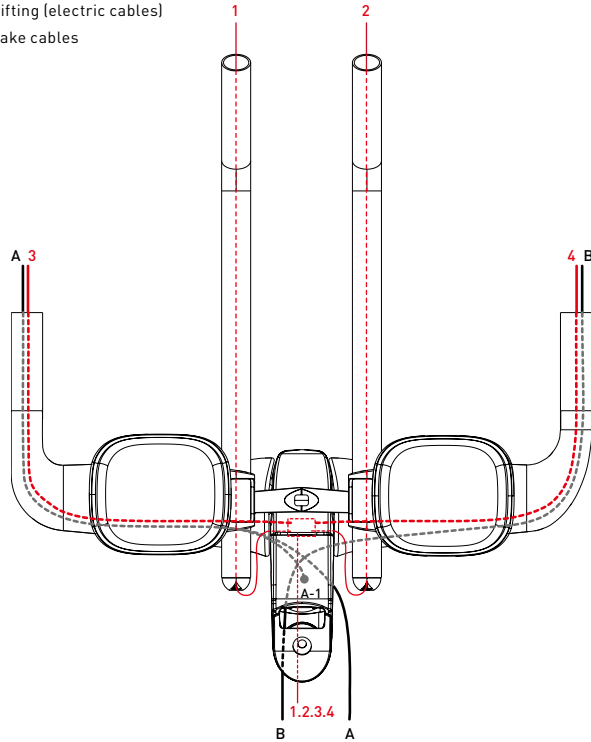
CABLE ROUTE MAP

- Shifting cables
- Brake cables



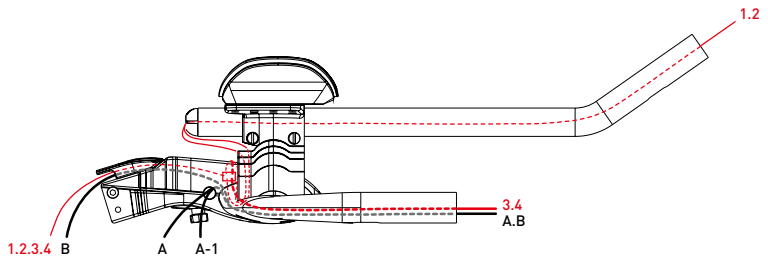
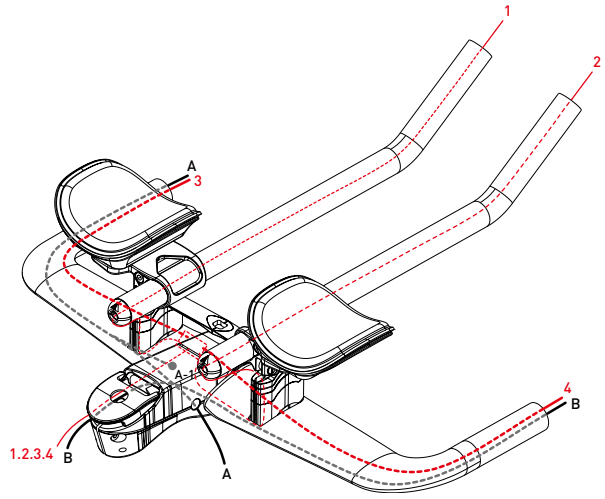
CABLE ROUTE MAP

- Shifting (electric cables)
- Brake cables



CABLE ROUTE MAP

- Shifting (electric cables)
- Brake cables



 **WARNING**

- Profile Design Worldwide Two Year Limited Warranty.
- Profile Design, LLC (distributor) warrants to the original retail purchaser ("you") that the Profile Design product for which you received this warranty is free from defects in material and workmanship for (2) two years from the date of original retail purchase. For more details on this warranty, its exclusions and/or how to make a claim under the warranty please call +1 310.747.0085 extension 161 or visit www.profile-design.com/pages/warranty



2677 El Presidio Street
Long Beach, CA 90810
Ph: 310-884-7756

www.profile-design.com

© Profile Design LLC